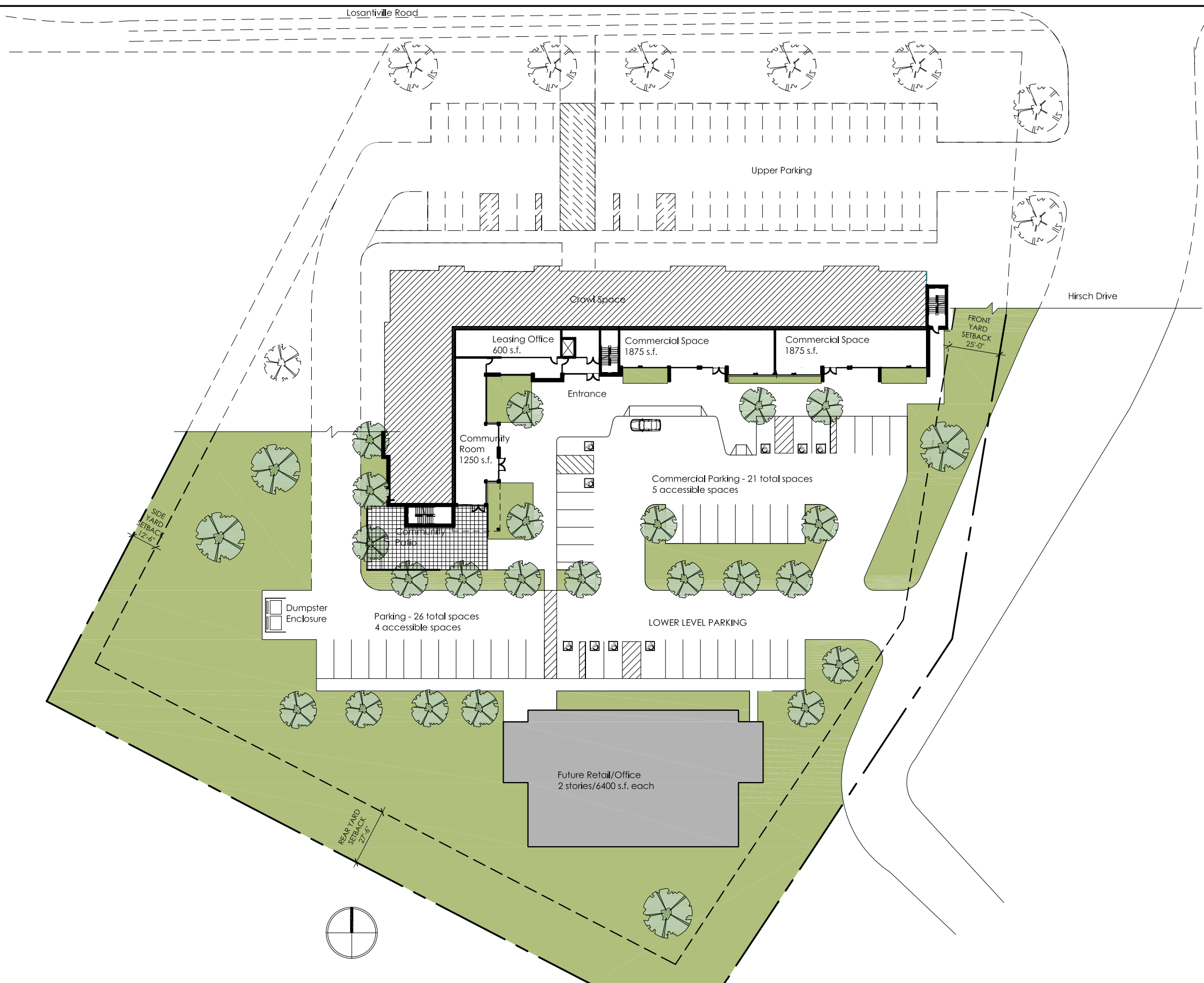


1811 LOSANTIVILLE SENIOR APARTMENTS

61,550 GROSS SQUARE FEET
4-STORY BUILDING

UNIT COUNT:
 36 - 2 BEDROOM TYPE-B UNITS - 905 GSF
 6 - 1 BEDROOM TYPE-B UNITS - 705 GSF
 3 - 2 BEDROOM ACCESSIBLE UNITS - 925 GSF
 5 - 1 BEDROOM ACCESSIBLE UNIT - 735 GSF



Site Diagram - 1st Floor
 1811 Losantiville Senior Development
 Cincinnati, OH



DATE: 1.19.2016
 SCALE: 1" = 50'-0"

CITYSTUDIOS
 ARCHITECTURE
 222 East 14th Street
 Cincinnati, OH 45202
 ph: 513 . 621 . 0750
 citystudiosarch.com

A1.0